



Koppert

# Rhyzobug

Ready to deal with  
armoured scales



Partners  
with Nature

# Why to use Rhyzobug



## Pesticide reduction

- No residues on crop
- No resistance possible
- Reduces the number of pesticide applications
- Reduces the number of active ingredients
- Makes it able to comply to the black pesticide list in the value chain

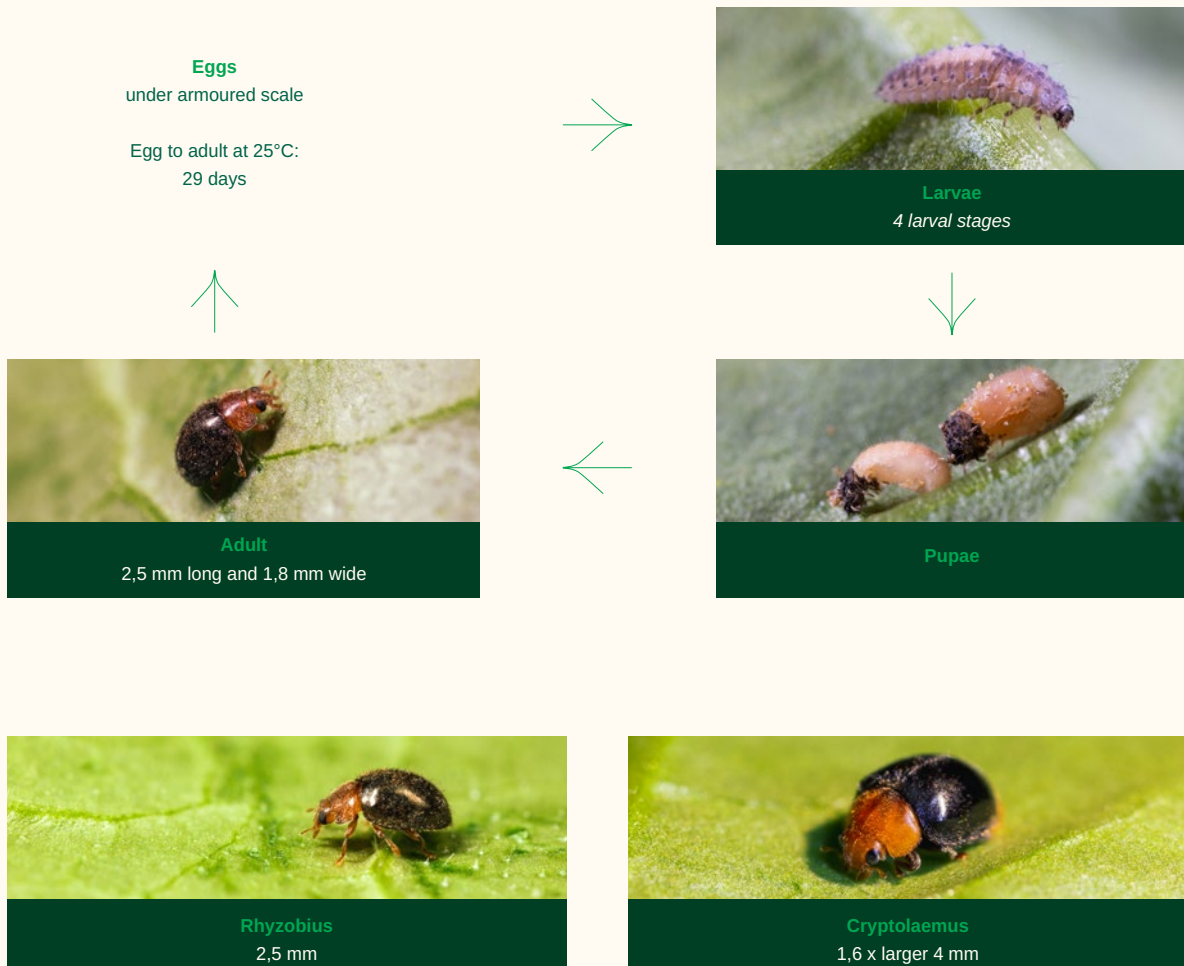
## Health and environment

- Safe for user
- Admitted in organic agriculture
- Contributes to a healthier end product
- Environmentally friendly
- Helps biodiversity
- Natural solution

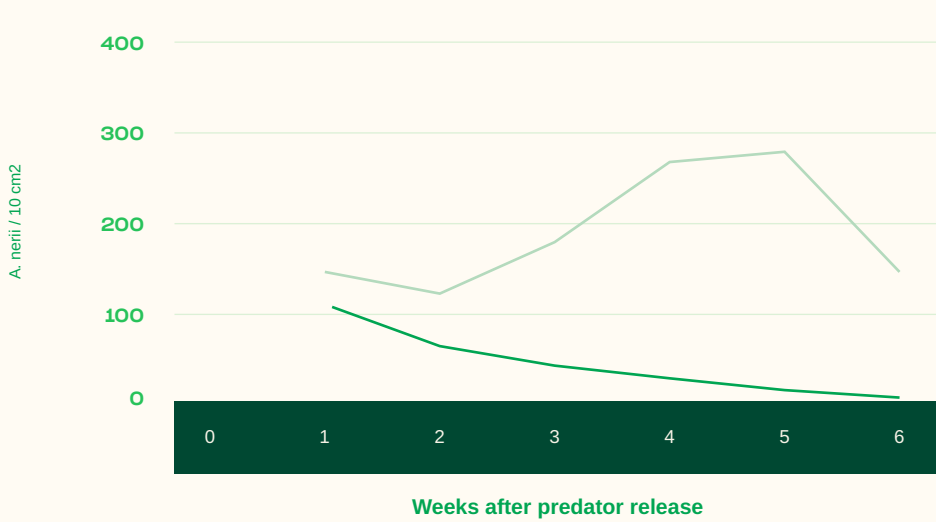
## Product benefits

- Easy to apply by anyone
- Controls different species of armoured scales efficiently
- Both adults and larvae predate on all stage of armoured scale insects
- Easy to combine with other natural enemies like *Aphytis melinus*

## *Rhyzobius lophanthae*

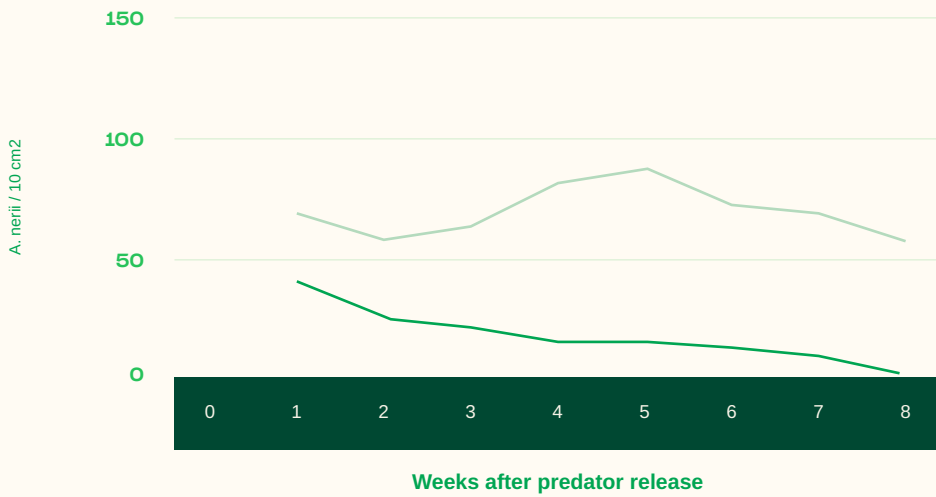
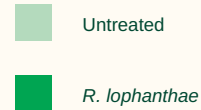


# Proven results



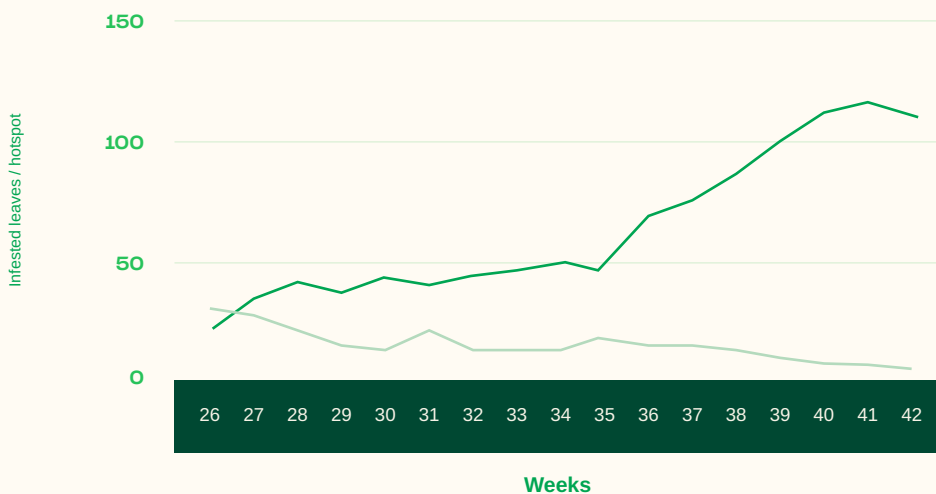
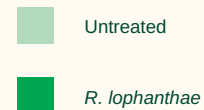
## The effect of *Rhyzobius lophanthae* on *Aspidiotis nerii* in lemon in Spain

Introduction rate 1:250, avg T: 27,8°C



## The effect of *Rhyzobius lophanthae* on *Aspidiotis nerii* in lemon in Spain

Introduction rate 1:250, avg T: 20,1°C



## The effect of *Rhyzobius lophanthae* on *Aulacaspis tubercularis* in mango in Spain

Weekly introduction rate depending on infestation, avg T: 28,9°C



# How to use

## How to use

- Apply in the evening
- Tap beetles directly on the plants or use D-boxes
- Start introduction as soon as the first armoured scales are detected and repeat if necessary
- The dosage of Rhyzobug depends on climate, crop and armoured scale density and should always be adjusted to the particular situation
- General outdoor introduction rates are 500-3000/ ha in several applications depending on infestation rate
- Avoid pesticide treatments in the hours after the release of Rhyzobug



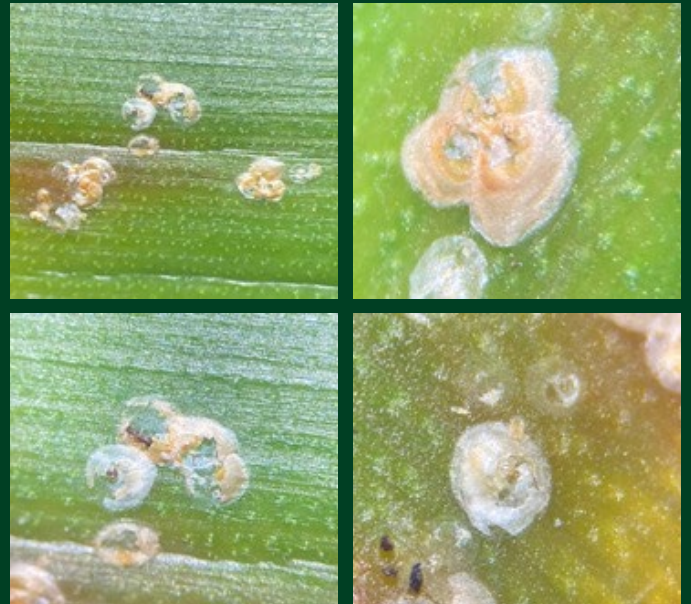
## Packaging

- 500 adults
- Some food for survival and optimal fitness
- Carrier: buckwheat hulls
- Cardboard tube

# The effect



Small scales are consumed entirely.



In larger scales, feeding damage is visible as irregular holes in the scale cover.